



6000 SERIES **ALUMINIUM**

# Wave Grate.

Aluminium linear grate design.



**100% Australian Made.**

High flow linear drainage designed and manufactured in Australia from local materials.



Visit [stormtech.com.au](http://stormtech.com.au)  
for tools and inspiration.

Call **1300 653 403**

**ARCHITECTURAL  
GRATES + DRAINS**

# The new wave of grate innovation.

Crafted from a single piece of highly durable, anodised Australian aluminium.

Stormtech delivers new bathroom innovation with the Wave Grate drainage system, featuring a unique wave profile allowing high-flow water removal.

Designed and manufactured in Australia by Australian mined and treated aluminium, the Wave Grate is easy to clean and cleverly conceals drainage channels for perfect integration.

Available in Modular Kits, Made-to-Length, and Fixed Length Units, the Wave Grate can be finished in Satin, Black or Gold Brass and is guaranteed not to fade.

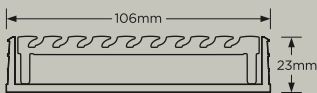
Appropriate for use in indoor and outdoor settings; talk to us about custom specifications to suit your requirements.



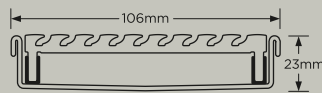
## ALSO AVAILABLE WITH WAVE

Matching Square Floor Waste  
Linear Threshold Drainage

### Wave Dimensions + Profiles



Modular Kits  
uPVC Channel



MTL / Fixed Length Units  
Stainless Steel Channel

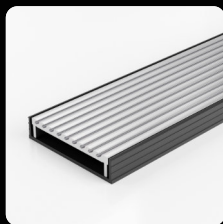
- Australian Designed and Manufactured
- Indoor and Outdoor Applications
- Available in Satin, Black or Gold Brass
- Easy to Clean Surface
- Australian Standards Compliant

Channels over 3000mm supplied in sections.

Designed and manufactured in Australia, the Wave Grate is manufactured from locally sourced Australian aluminium, anodised for durability and finish.



**100AAG20**  
Grey uPVC Channel



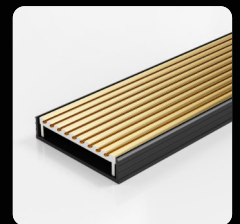
**100AAGBL20**  
Black uPVC Channel



**100AAi20**  
Stainless Steel Channel



**100AAGALLBL20**  
Black uPVC Channel



**100AAGBL20-BG**  
Black uPVC Channel

